

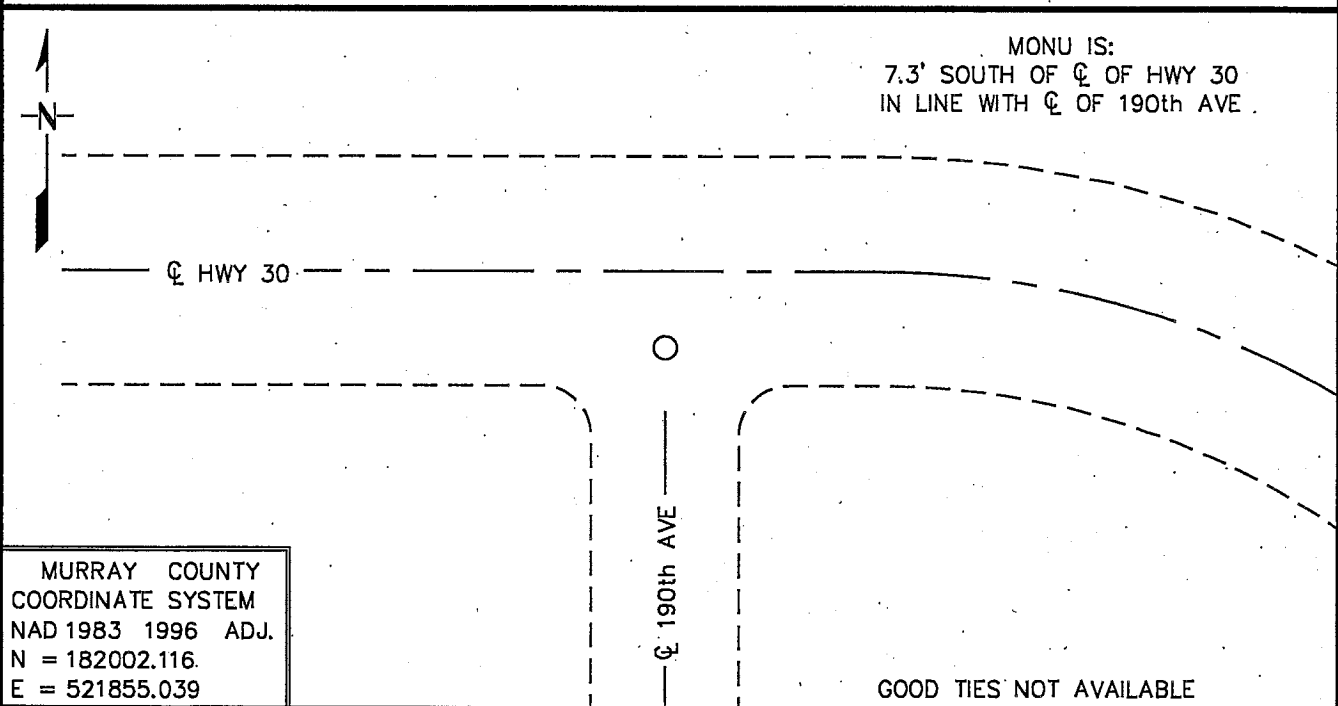
Index No. L-5

CERTIFICATE OF LOCATION OF GOVERNMENT CORNER

EAST QUARTER Corner of Section 18, Township 107 N, Range 40 W
5th Principal Meridian, State of Minnesota, County of MURRAY

At the corner location shown on the sketch:

- On _____ found a _____
DATE
- left monument as found, lowered monument, removed monument (explain)
- On 10/13/09 Placed a 3/4" X 6" IRON ROD WITH PLASTIC CAP STAMPED
DATE
"MN DNR LS 17003", DOWN 0.05'



Statement of evidence for this corner location is on back of this page. 11/2/09
WMA01426.00.00.01

I certify that this document was researched and prepared by me or under my direct supervision.

SIGNATURE Alice W. Shipp DATE 11/04/09 License Number 17003
Title: Land Surveyor Professional Engineer County Surveyor County Engineer

The DNR Division of Lands and Minerals contacted the following for survey information:

Minnesota History Center in St. Paul
Minnesota Department of Transportation Records Center in St. Paul
Minnesota Department of Transportation in Willmar
Murray County Recorder's Office
Murray County Highway Engineer's Office
Bueltel-Moseng Land Surveying of Marshall
Zieske Land Surveying, Inc. of Windom
Madsen Land Surveying, Inc. of Fairmont
Bonnema Surveys of Willmar

1861 U.S. General Land Office notes, obtained from the Minnesota History Center, show the corner as follows:

“Set ¼ Sec Cor P & M “

1928 April 17, Surveyor's Record Book, obtained from the County Highway Engineer's Office, contains a survey in the Northeast Quarter of Section 18, surveyor not indicated. Survey states that the corner was established on line with the west quarter corner of Section 18 and the center of Section 18. A 5 by 12 by 16 stone with small slabs on north and south was set to mark the location of the corner. The following ties are shown to the corner:

fence corner, 35.5 feet southwest
fence line 37 feet north
fence corner 34 feet southeast

No distances from other government corners or the center of Section 18 are shown.

1928 April 17, Surveyor's Record Book, obtained from the County Highway Engineer's Office, contains a survey in the Northwest Quarter of Section 17, surveyor not indicated. Survey shows a 5 by 12 by 16 stone with small slabs on north and south at corner with the following ties:

fence corner, 35.5 feet southwest
fence line 37 feet north
fence corner 34 feet southeast

No distances from other government corners are shown.

1928 April 17, Murray County Highway Department section corner information website, states that a 5" by 12" by 16" stone was placed at the corner. The following ties are shown to the corner:

small stake on N/S
fence corner, 35.5 feet southwest
fence line 37 feet north
fence corner 34 feet southeast

1952 Field notes for Trunk Highway Number 30, obtained from the Minnesota Department of Transportation in Willmar, state that a 5" by 12" by 16" stone is in place at the corner, 20" below the surface. The following ties are shown to the corner:

8.25 feet south of P.O.S.T. 165+35.25
90° 37' from the forward tangent
"X" on east end of culvert, southeast 32.1 feet
"X" on west end of culvert, southwest 31.6 feet
C.N.D. in fence post, northwest, 52.8 feet
????, northeast, 63.8 feet
on center line of existing east-west road
in line with the center line of road south

No A Right-of-Way Map for Minnesota State Trunk Highway Number 30, obtained
Date from the Minnesota Department of Transportation Records Center, shows that a 5" by 12" by 16" stone was found at the corner. The corner is shown:

8.25 feet south of P.O.S.T. 165+35.25
90° 37' from the forward tangent
on center line of existing east-west road
in line with the center line of road south

1970 August 27, the DNR Bureau of Engineering conducted a survey in the SW ¼ of Section 18 and established the corner as follows:
on the easterly extension of a line from the west quarter corner of Section 18 thru the center of Section 18 and in line with the center line of a road south
A spike was set to mark the location of the corner and was found to be:
2658.30 feet from the southeast corner of Section 18
No information is given about the record stone.

1973 April 25, the DNR Bureau of Engineering conducted a survey in the NW ¼ of Section 18 and found the spike that was set for the corner in 1970 and used it for the location of the corner and found it to be:
about 5 feet south of the centerline of Highway 30
2649.82 feet from the southeast corner of Section 18

2009 October 13, the DNR Division of Lands and Minerals visited the area of the corner and found its location to be in a 4 foot fill section of State Trunk Highway Number 30 that has recently been over laid with bituminous. The area of the corner was scanned with an electric metal detector but no metal attraction was obtained.

East Quarter Corner of Section 18, Township 107 North, Range 40 West, Page 3 of 3

The following center line stationing was found on State Trunk Highway Number 30:

- a) TS 163+53.4 – found a rebar
- b) PI 74+16.4 – found a spike

Then P.O.S.T. 165+35.25 was computed as follows:

- a) on the easterly extension of a line from PI 74+16.4 thru TS 163+53.4
- b) 181.85 feet from TS 163+53.4

Then a position for the quarter corner was computed as follows:

- 8.25 feet south of P.O.S.T. 165+35.25
- 90° 37' from the forward tangent

Analysis of the above information led the DNR Division of Lands and Minerals to conclude that the corner area needs to be dug and a search made for the stone of record. It was decided to NOT dig for the record stone at this time because its location is in the middle of the east bound lane of the highway, which requires a permit from MNDOT for a lane closer while the dig is taking place.

A $\frac{3}{4}$ inch by 6 inch iron rod with a plastic cap stamped "MN DNR LS 17003" was set at the computed position for corner as shown on the sketch of reference ties and was found to be:

- 2652.83 feet from the northeast corner of Section 18
- 2655.23 feet from a PK nail found in the area of the southeast corner of Section 18